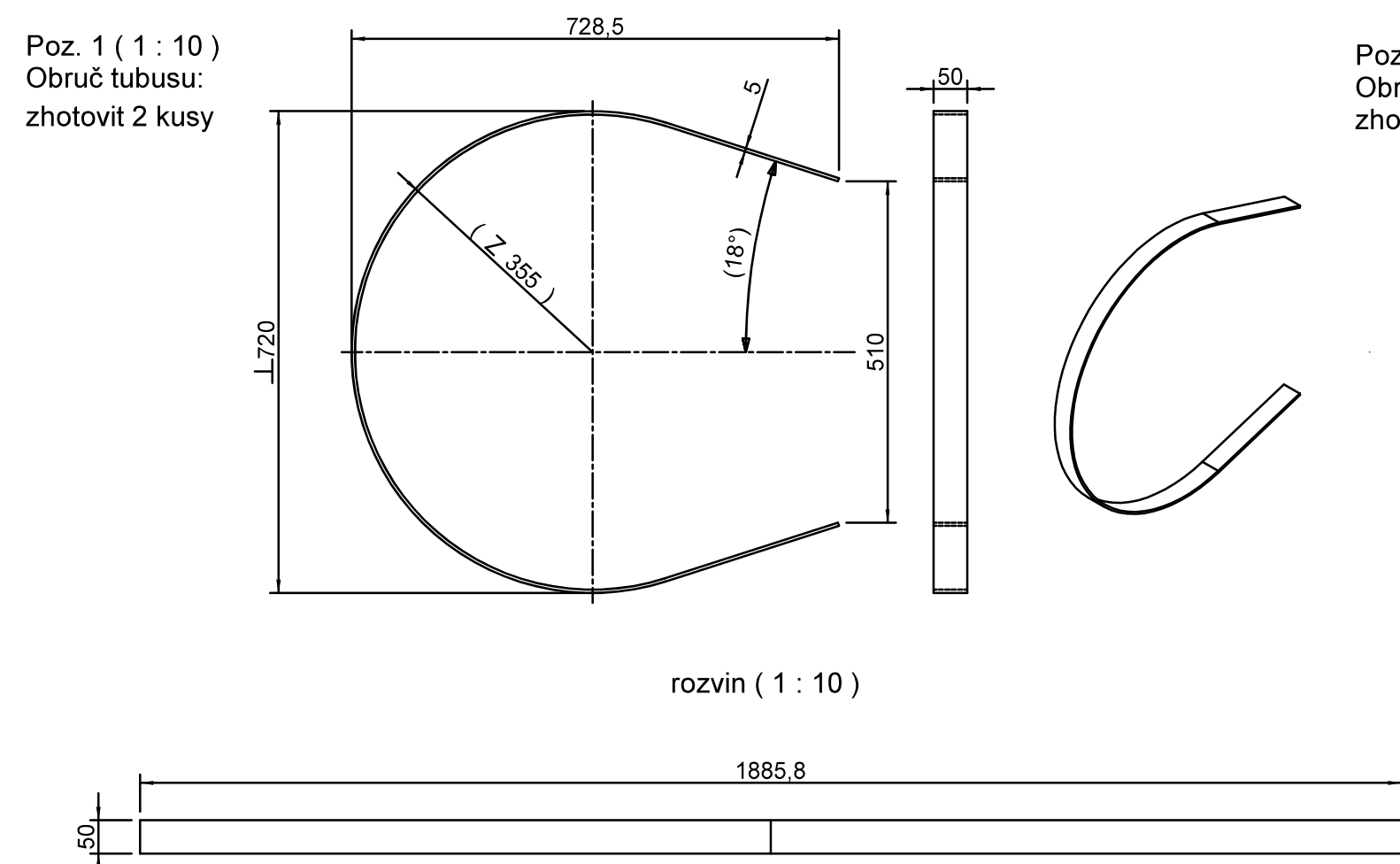
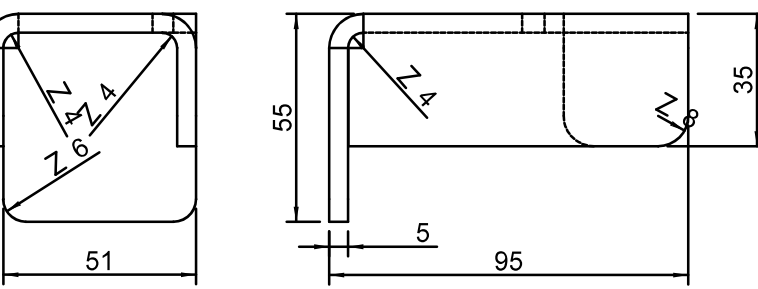
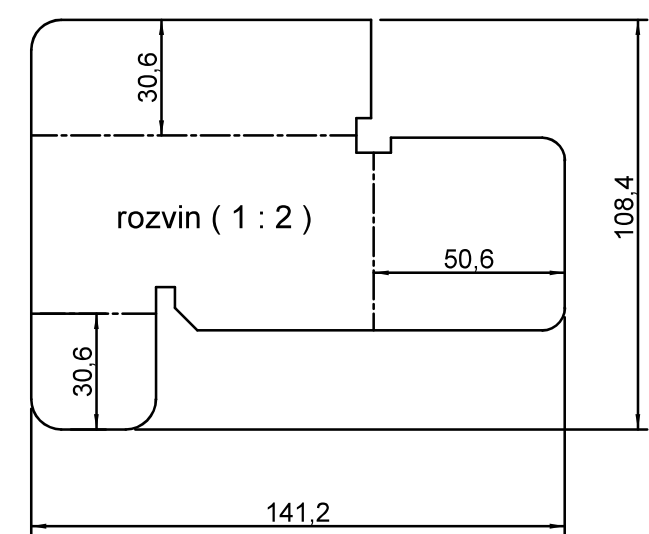


Štěrín - P ( 1 : 5 )  
Poz. 4

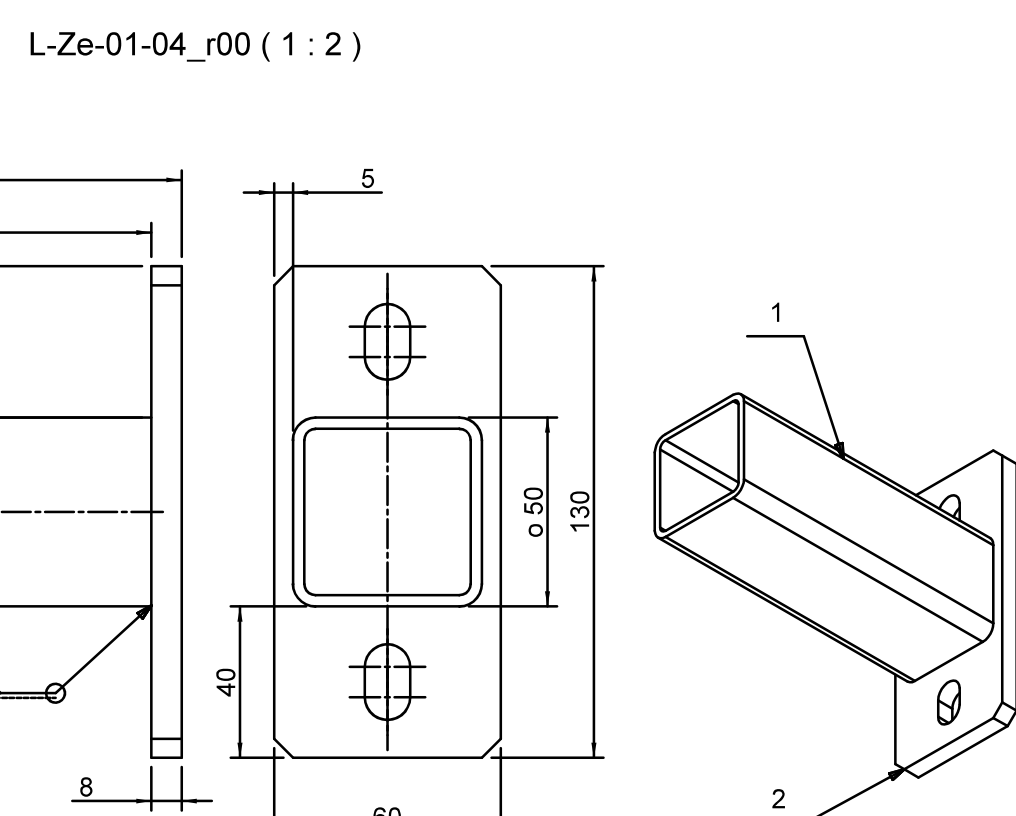
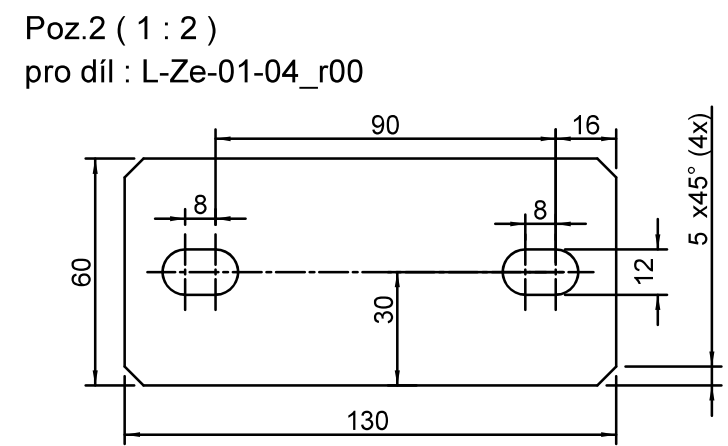
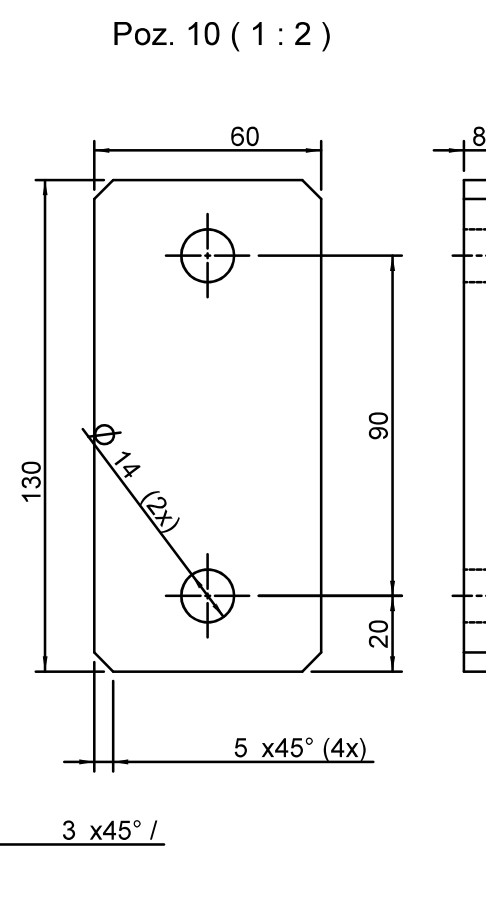
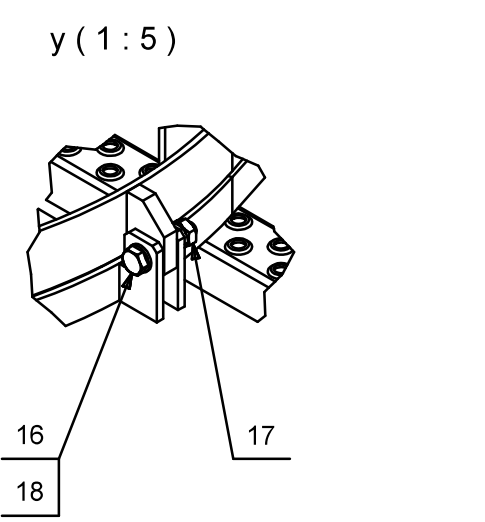
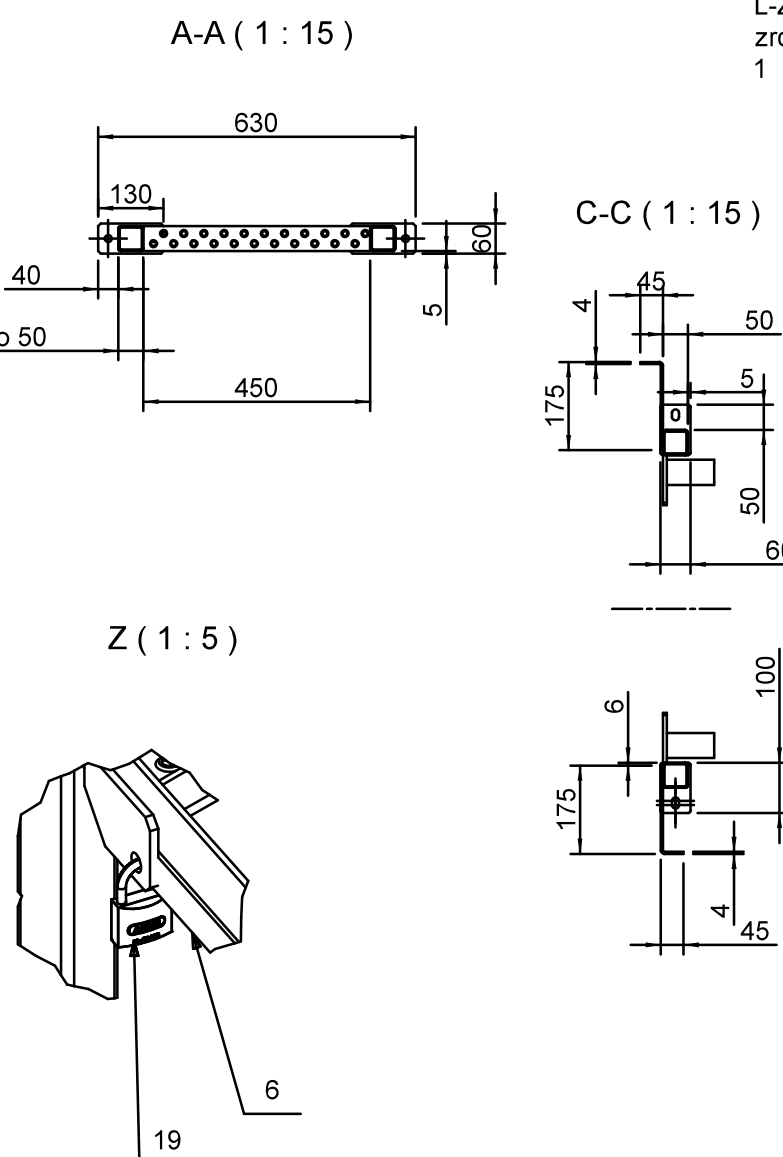
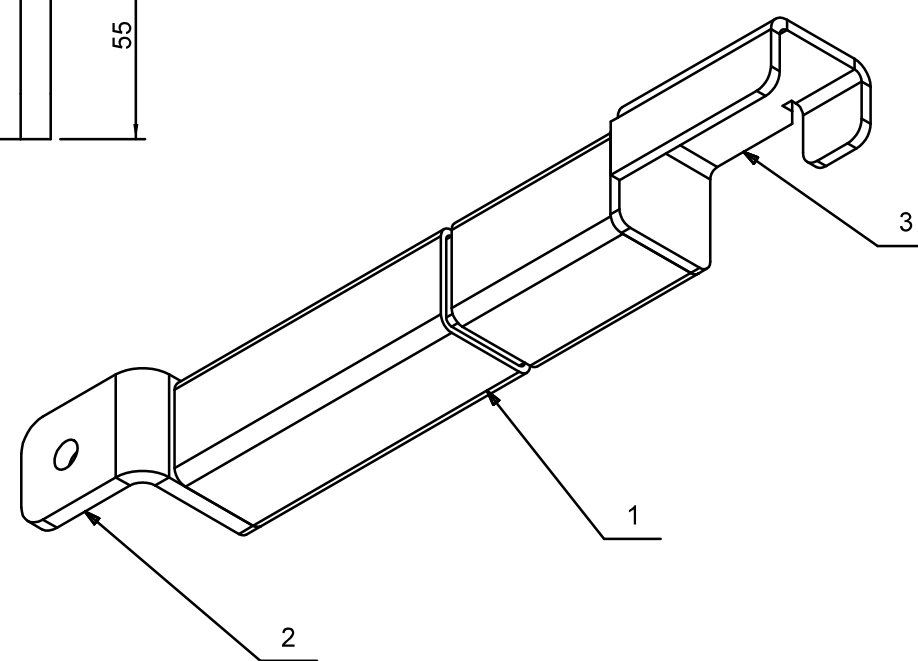
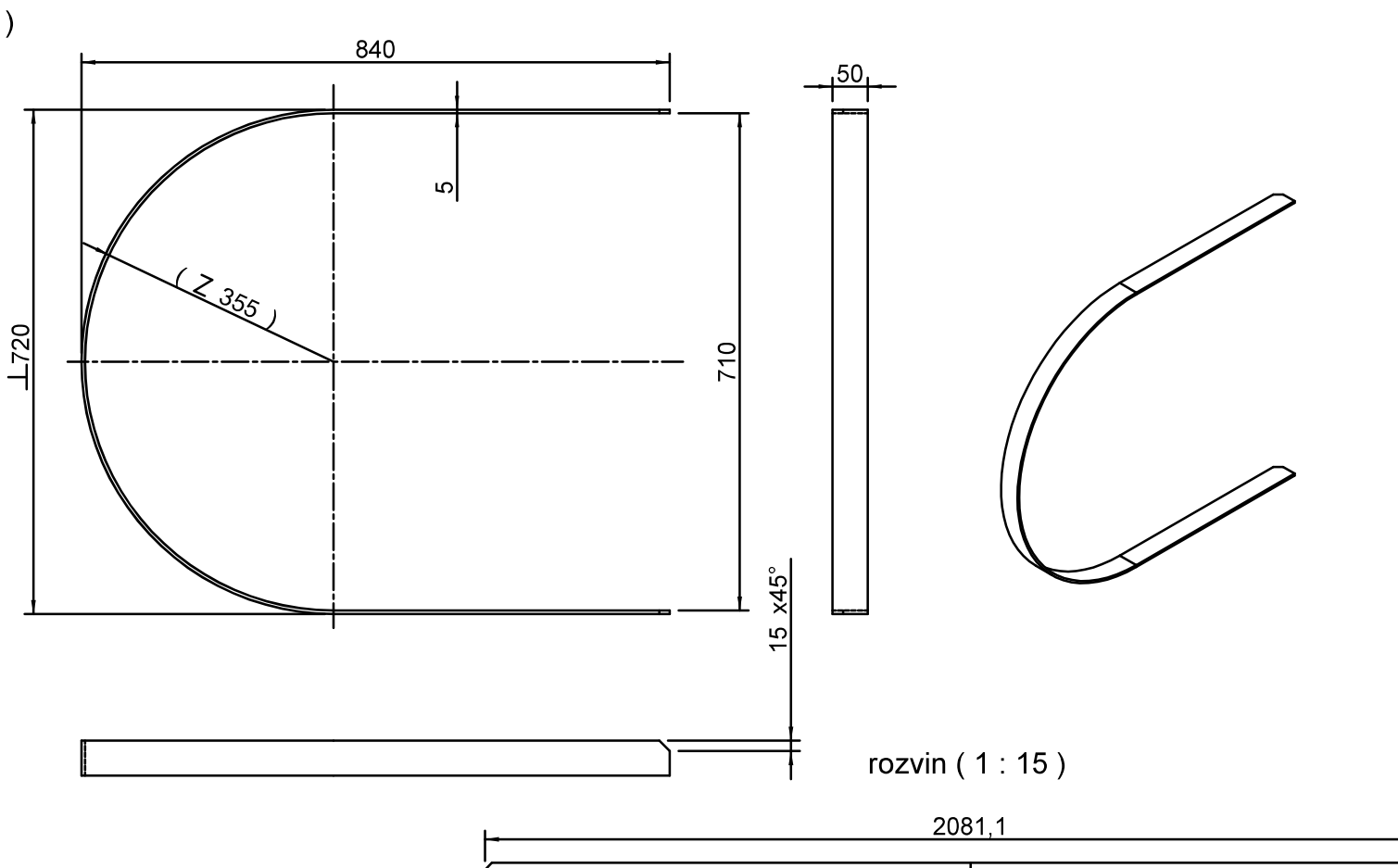
84°

364.7

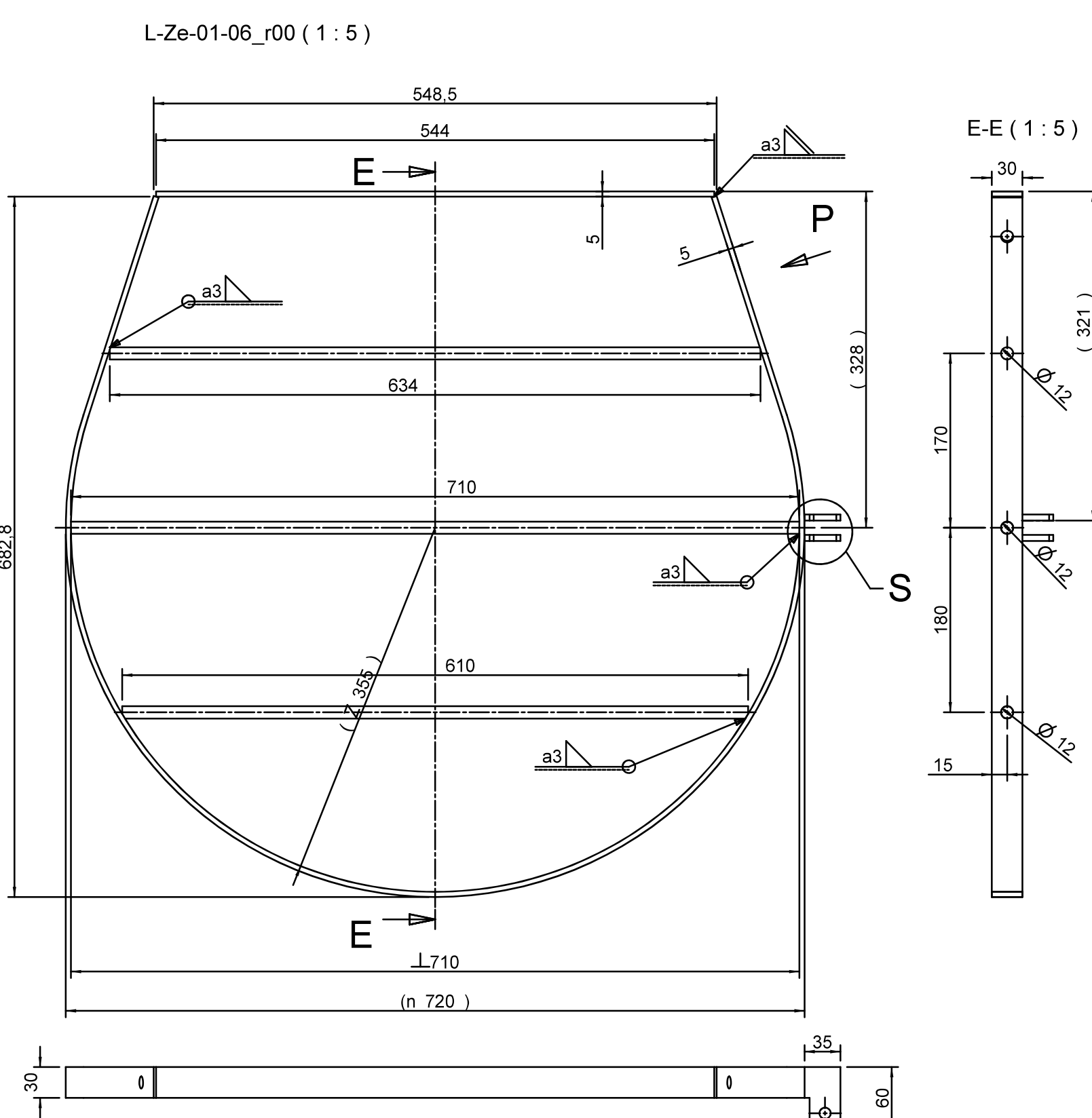
84°



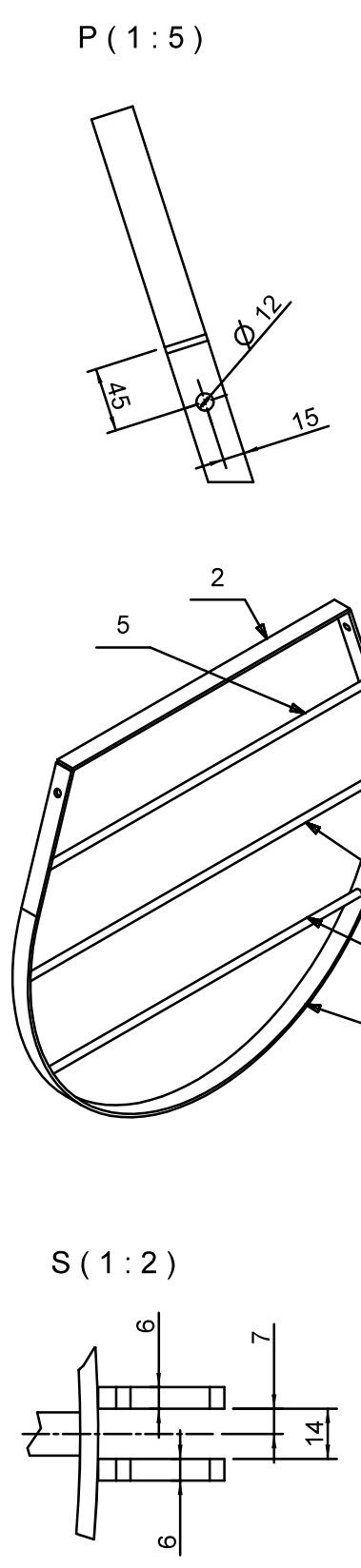
Technical drawing of a door assembly. The top view shows a door with a width of 100mm. The handle is mounted on the right side, with a distance of 51mm from the left edge to the handle's center. The handle has a width of 46mm. The side view shows the door's profile with a height of 68mm. The handle is mounted on the right side, with a distance of 51mm from the left edge to the handle's center. The handle has a width of 46mm. The side view also shows the door's thickness and the handle's mounting details.



Rozpiska pro: L-Ze-01-04_r0 0						
2	1	Pásovina 60x8	L = 130 mm	11 373/St 37-2	DIN 1017	0,460 kg
1	1	Jekl 50x50x3	L = 140 mm	11 373/St 37-2	EN 10219	0,594 kg
Poz:	kus:	Popis	Typ / Rozměr	Material	Norma	Hmotnost
ROZPISKA						



Rozpiska pro: L-Ze-01-06 /0						
6	U1	Kulatina n 12	L = 610 mm	11 373/S235J	DIN 1013	0,542 kg
1		Kulatina n 12	L = 834 mm	11 373/S235J	DIN 1013	0,563 kg
4		Kulatina n 12	L = 710 mm	11 373/S235J	DIN 1013	0,539 kg
3		Pasovina 35x6	L = 80 mm	11 373/S235J	DIN 1017	0,037 kg
2		Pasovina 30x6	L = 544 mm	11 373/S235J	DIN 1017	0,641 kg
1		Pasovina 30x6	L = 1797 mm	11 373/S235J	DIN 1017	2,112 kg
Proz.	kus.	Popis	Typ / Rozměr	Material	Norma	Hmotnost
ROZPISKA						

[illegible]